



Photo C4: Coarse Earthenware "brown Betty" teapot base and handle (lot C4)



Photo C5: Flow Blue whiteware cup base (Royal Doulton Madras pattern) and blue painted lid (lot C5)



Photo C6: Glass container finishes (lot C5).
Left - machine molded jar; Rt - pharmaceutical bottle.

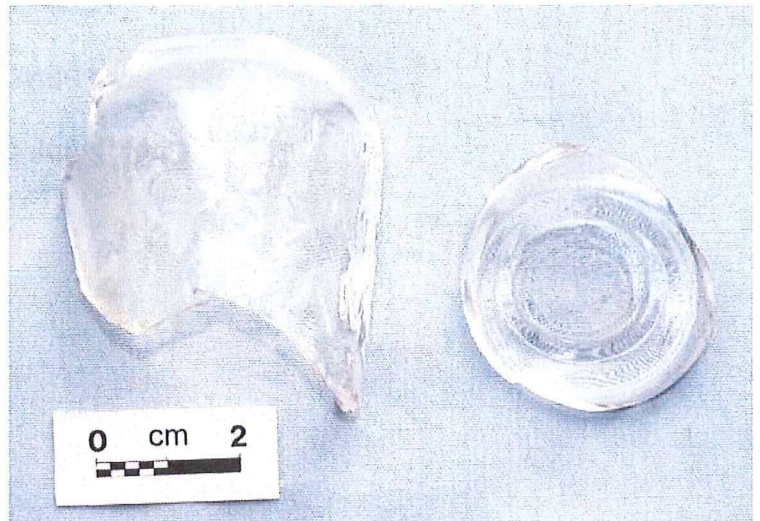


Photo C7: 'Pompeia' massage cream (lot C4)



Photo C8: Jar fragment ".moline" (Lot C4)
Thymoline.

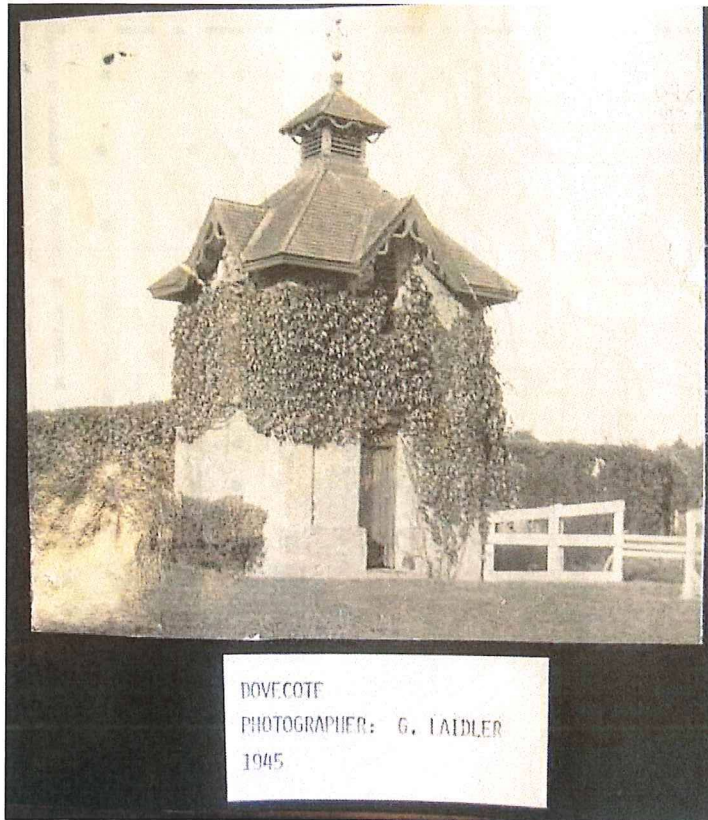


Figure 9a:
The Dovecote, facing NE.
Note presence of a full doorway
in south wall. (From Sims 2008)

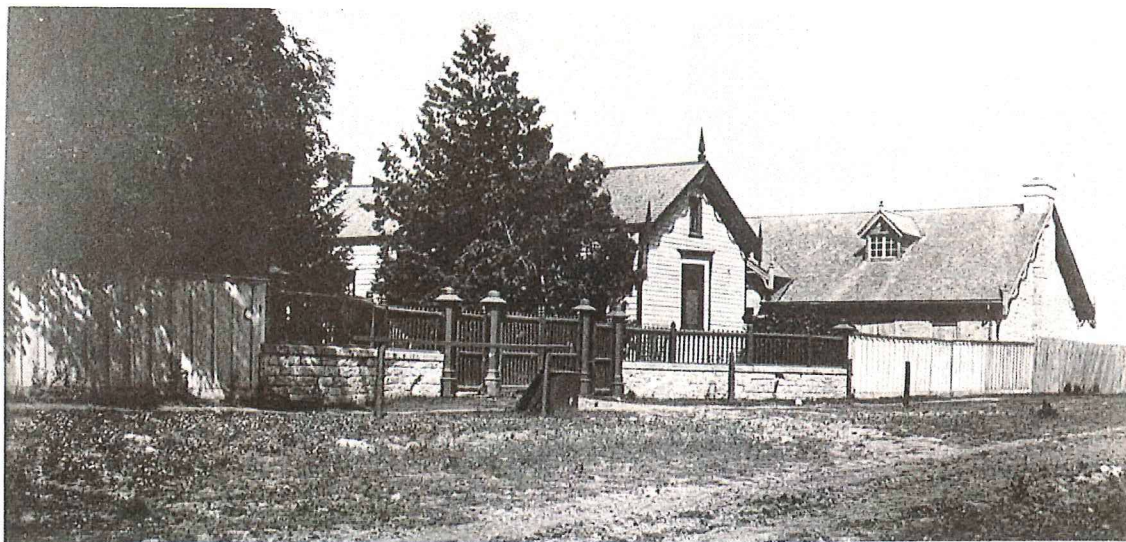


Figure 9b: View of Fennel Ave. entrance to Auchmar showing stable(right) and gate lodge still standing (from Sims 2008, Young collection).